



KURZEMES
PLĀNOŠANAS
REĢIONS

NACIONĀLAIS
ATTĪSTĪBAS
PLĀNS 2020



EIROPAS SAVIENĪBA

Eiropas Sociālais
fonds

IEGULDĪJUMS TAVĀ NĀKOTNĒ

Deinstitutionalisation process in Latvia and project “Kurzeme visiem”

Inga Kalnina,
Project manager

at Kurzeme Planning Region

Peer review 24.05.2018., Prague



WHAT IS DEINSTITUTIONALISATION (DI)?

DI is process,

when services of long term social care centres (institutions)

are slowly replaced by

society based social services (for adults) and family friendly services (for children)



for those, who are in the institutions



for those, who now live in society, but could be moved/placed into institutions



WHY DEINSTITUTIONALISATION (DI)?

To improve
the living conditions for the people
and the availability of social services
in Europe/Latvia/Kurzeme region
and to implement human rights

..., to live independently or with needed support,
control personal life and decisions,
have meaningful day, be in the society, ...



DI IMPLEMENTATION in EUROPE AND LATVIA

**Long
and complex
process!**
(several decades
+ many parties)

Common
and good
understanding

Desire
to do

Co-operation
of all involved
parties

Careful and
detailed
planning

Careful
implementation

**Preparation for DI process
is needed and very essential**



DI in LATVIA

Since 1991
and during 2014-2020



DI IMPLEMENTATION IN LATVIA

Project implementation
started at the end of 2015

according to specific regulations (No.313)
and
Action plan on DI (2015-2020)



EU support for DI PROCESS in LATVIA (2014-2020)

Directly through 2 EU funds (amounts include state co-financing 15%)

ESF - EUR 48 709 260

ERDF - EUR 44 441 977

Sinergy with many other social field projects (under priority 9),

for example:

- «Development of professional social work in municipalities» and
- Projects for improving employment of people with disability and vocational training for people with mental disorders, disability identification, support person service piloting and social entrepreneurship implementation,

Projects under other priorities – including within health care system,
education field etc.



DI IMPLEMENTATION IN LATVIA



DI IMPLEMENTATION IN LATVIA



KURZEMES
PLĀNOŠANAS
REĢIONS



ZEMGALES
PLĀNOŠANAS
REĢIONS



LR Labklājības ministrija



RĪGAS
PLĀNOŠANAS
REĢIONS



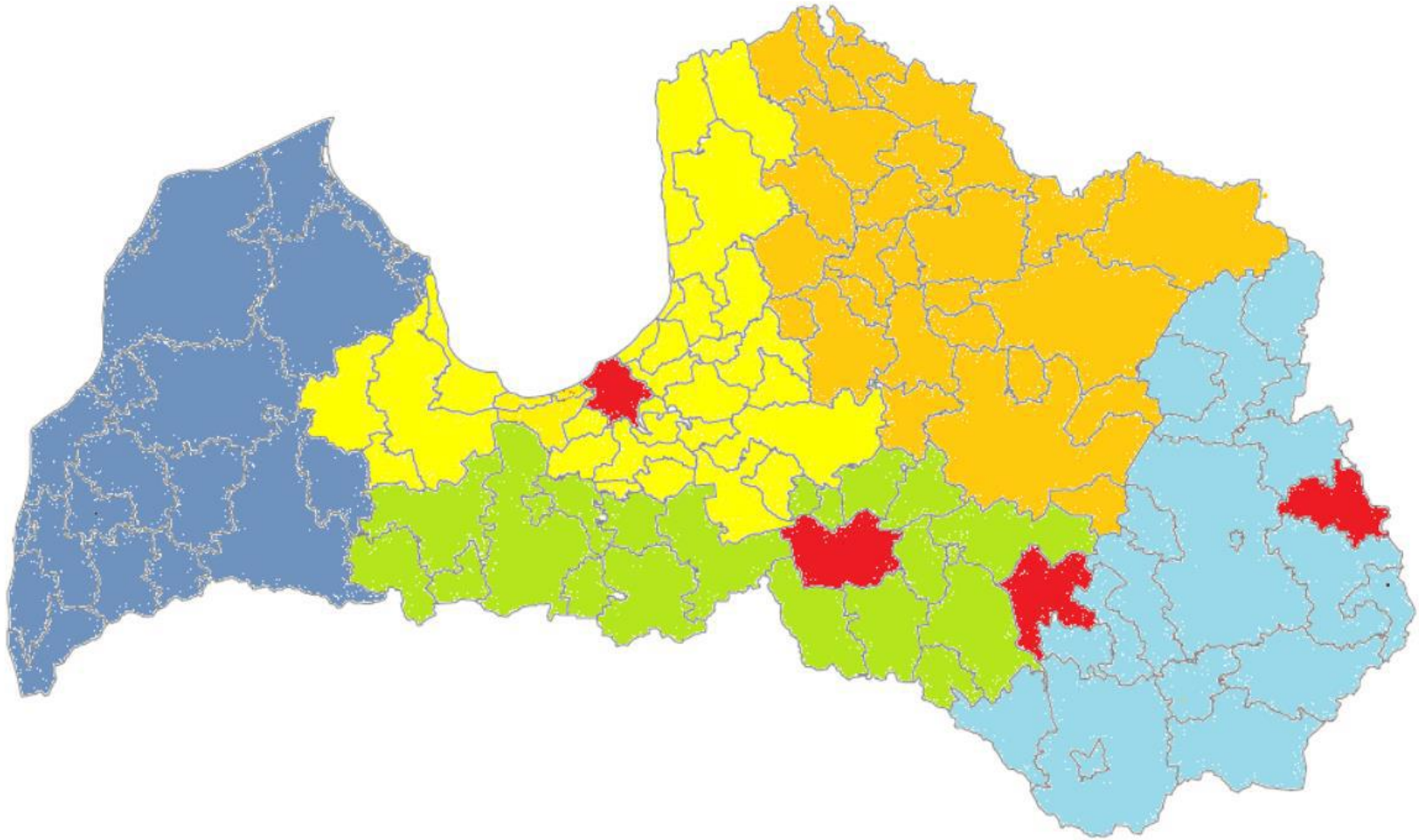
LATGALES PLĀNOŠANAS
REĢIONS

- municipalities
- state long term social care centres
(for persons with mental disorders)
- long term social care centres for children



DI IMPLEMENTATION IN LATVIA

Municipalities - 115 out of 119 (97%)



DI IMPLEMENTATION IN LATVIA

**Changes (6x and more) / flexibility
during the Project implementation**

including

NGO - representatives of clients' interests
or only via municipalities (as community based
social service providers)

->

community based social service providers
for children with functional disorders



DI IMPLEMENTATION IN LATVIA

Planned results (ESF DI)

~ 3 institutions will be closed

	Persons with mental disorders, receiving society based social services	Children in institutions, having evaluation of needs	Children with functional disorders receiving society based social services
Rigas region	903 (301)->552 (61)	722 ->405	1530 ->580
Vidzeme region	189 (63)->433 (64)	194 ->158	408 ->420
Kurzeme region	315 (105) ->375 (29)	193 ->128	476 ->330
Zemgale region	273 (91) ->351 (71)	334 ->276	408 ->380
Latgale region	420 (140) ->389 (65)	317 ->231	578 ->390
Total in Latvia	2100* (including 700 ->290 leave in institutions)	1760* un ** ->1198	3400 ->2100 +1300 (NGO)

* - children/persons evaluated until 31.12.2018.

** - number of children decreases from 1799 till 720

DI IMPLEMENTATION IN KURZEME REGION

According to the statistics at February 2014 there were

29 institutions - long term care service providers in Kurzeme region:

**5 long term social care centres for children,
18 long term social care centres for elderly
and**

**1 state long term social care centre
with 6 brunches (6 institutions)**

1851 clients = in centres for children – 8%, in centres for elderly – 43% and in state centres – 49%

1189 clients with disability

in centres for children - 36, in centres for elderly - 373, in state centres -780





KURZEMES
PLĀNOŠANAS
REĢIONS

NACIONĀLAIS
ATTĪSTĪBAS
PLĀNS 2020



EIROPAS SAVIENĪBA
Eiropas Sociālais
fonds

IEGULDĪJUMS TAVĀ NĀKOTNĒ

PROJECT «KURZEME VISIEM»

(KURZEME – REGION FOR EVERYONE)



The aim of the project «Kurzeme visiem»

**to increase community-based
social service availability for
people with disabilities and
family friendly services for
children at the place of their
residence in Kurzeme Region**



Project «Kurzeme visiēm» target groups

- **Adults with mental disorders* (I un II disability group)**, who receive services in state long term social care centres or has potential to be moved/placed to institution

*mental disorders – includes both =

mental health (psychosocial problems, illness) and intellectual development disorders

- **Children in long term social care centres until 18 years** (orphans and children without parental care)
- **Children with functional disorders**, who has disability, **in families** and their families or foster families
- **Potential** guardians, adopters, foster families



Partners of project «Kurzeme visiem»

23+5 partners =

**20 Kurzeme region municipalities
+5 municipalities from other regions,**

**1 state long term social care centre
(all 6 branches)**

and

4 long term social care centres

for children



Project main activities

1. **Assessment of individual needs and development of support plans**
2. **Development of Kurzeme region DI plan**
3. **Development of Kurzeme region reorganisation plans for long term social care centres (for children)**
4. **Asistance to persons with mental disorders while preparing for transition from institutional to society based care (during moving)**
5. **Providing community based social services for persons with mental disorders**
6. **Providing community based social services for children with functional disorders**
7. **Training specialists for working at community based social services**
8. **Informative and educational events for raising society's awarness**



**SOCIAL SUPPORT
OPPORTUNITIES FOR ADULTS
AND CHILDREN WITH
DISABILITIES
WITHIN THE PROJECT**



Services for persons with mental disorders (375)

**Care at home,
day care centres,
special workshops,
group flats/houses
and**


**short term (up to 30 days/year) social care services,
individual support and consultations of specialists,
support groups and skill development classes**



Services for children with functional disorders (330)

- social rehabilitation
- day care centre for children
need to have assesment and individual support plan
- Short term social care service (up to 30 days/year)
- Social care service at home (50/10hours per week)
having recognized need for special care



A decorative border composed of various colorful stones, shells, and pebbles in shades of yellow, green, brown, and blue, arranged in a circular pattern around the central text.

questions
answers
discussions

More INFORMATION

in latvian:

<http://www.lm.gov.lv/text/3516>

www.kurzemevisiem.lv

http://www.kurzemesregions.lv/projekti/Eiropas_Socialais_Fonds_ESF/Kurzeme_visiem





Thank you!

Kurzeme Planning Region

Valguma street 4a, Riga, Latvia LV-1048

www.kurzemesregions.lv

e-mail: info@kurzemesregions.lv

phone.: +371 67331492

Inga Kalnina

Project manager

e-mail: inga.kalnina@kurzemesregions.lv

Tel.: +371 27008743